

Wyoming Office of Homeland Security APPLICATION FOR 2022/2023 SHSP FUNDING



Prior to applying, please consider the following:

- The **Period of Performance** for the grants used to support this funding opportunity ends **August 31, 2026**. No extensions are available. If your application is selected, all elements of the project must be completed by this date.
- Because of the length of time it takes to conduct an Environmental & Historical Preservation (EHP) review, projects requiring EHPs are not eligible for this opportunity.
- Likewise, training or exercises *that will occur beyond the August 31st end date* will not be considered for this opportunity.
- **Do not combine multiple projects on a single application.** Each project should be submitted on a separate application.
- All SHSP supported projects must have a nexus to terrorism.
- *Supplanting* is prohibited; applications to recoup expenses for projects already budgeted are not allowed.
- The deadline to submit a complete application is **March 30, 2026**. (Submission instructions below.)

APPLICANT AGENCY INFORMATION

Agency Name:		Address:	
Applicant Contact:		City:	Zip Code:
Email:	Phone #:		

PROJECT INFORMATION

What type of agency will this project primarily support?		Total Amount Requested:	
Did you apply for support for any portion of this project through the 2025 SHSP application? <input type="checkbox"/> Yes <input type="checkbox"/> No			
Project Description (Be concise; this description is limited to 500 characters)			
Please indicate this project's Primary Core Capability (click here for more information):			
List the expenses associated with this project request.			
<ul style="list-style-type: none"> • Equipment requests should be supported by a recent vendor quote. • Training requests should be supported by the event advertisement that describes the training and includes the date and location of the event. 			
Type	Expense Description	AEL Code	Amount
Total Request:			

- Submission of this application does not guarantee funding. Successful projects must have a fully executed award agreement on file with WOHS prior to submitting reimbursement requests.
- Successful project applications will be transferred into **ZoomGrants** for grant management. Instructions for this process will be given at a later date.
- Submit this application as an email attachment and send to: darryl.erickson1@wyo.gov. Include all additional documentation (e.g., quotes, training announcements, etc.) as attachments in the same application email.
- For questions concerning this funding opportunity or the requirements of this application, call Darryl Erickson at (307) 777-4917.
- The deadline to submit applications is **March 30, 2026**.

ANT150F6

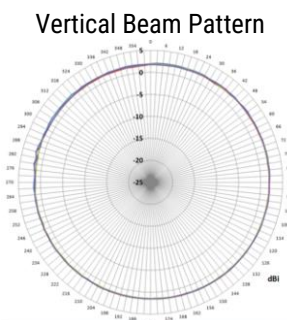
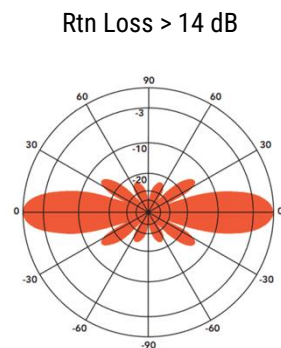
FIBERGLASS RADOME ANTENNA

The Telewave.io fiberglass radome antennas are rugged omnidirectional antennas suited for most environments. The radome provides protection from corrosive gases, ultraviolet radiation, icing, acid rain, and wind-blown abrasives. Intrusion and moisture protection is equivalent to an IP24 rating. The default radome color is Cool Blue™.

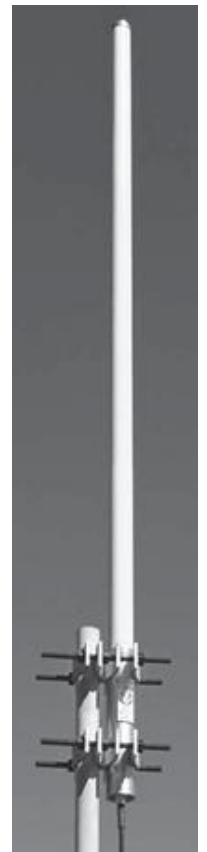
These antennas are constructed with brass and copper elements that are soldered together, producing a DC path to ground, and preventing internally produced intermodulation products.

The antenna kit includes a dual clamp set for mounting the antenna to a 1.5" to 3.5" O.D. support mast (Not Included.) Please contact your tower vendor or local structural engineering firm for assistance with mounting hardware requirements and configuration.

This antenna has two physical lengths based on the frequency configuration. Low range is 138 to 151 MHz, and High range is 150 to 175 MHz. Details in the charts below. Any sub model can be ordered as an inverted antenna.



Horizontal Beam Pattern



Variations - LOW

Part Number	Frequency	Band	Connector	Jumper	Default Clamp	Mounting
ANT150F6-1	138 to 144 MHz	LOW	N-F	None	ANTC482	Clamps Bottom (Normal)
ANT150F6-1DIN	138 to 144 MHz	LOW	7/16 DIN-F	None	ANTC482	Clamps Bottom (Normal)
ANT150F6-F	143 to 148 MHz	LOW	N-F	None	ANTC482	Clamps Bottom (Normal)
ANT150F6-2	144 to 151 MHz	LOW	N-F	None	ANTC482	Clamps Bottom (Normal)
ANT150F6-2-I	144 to 151 MHz	LOW	N-F	None	ANTC482	Clamps Top (Inverted)
ANT150F6-2DIN	144 to 151 MHz	LOW	7/16 DIN-F	None	ANTC482	Clamps Bottom (Normal)
ANT150F6-B	145 to 151 MHz	LOW	N-F	None	ANTC482	Clamps Bottom (Normal)

SPECIFICATIONS - LOW

Frequency Range (Continuous)	138 to 151 MHz	Wind rating / with 0.5" ice (MPH)	225 / 150
Gain	6 dBd/ 8.1 dBi	Maximum exposed area (sq.ft)	2.97
Power Rating (RMS Continuous)	500 watts / 57 dBm	Lateral Thrust experienced by the antenna 225 MPH (lb)	388
Passive Intermodulation (PIM) Rating	NA	Bending Moment transfer to top clamp 225 MPH (lb-ft)	2405
Peak Instantaneous Power (PIP) Rating	NA	Ferrule Dimension Inches (H" x D")	26 x 2.75 (66 x 7)
Beam width Vertical / Horizontal	20° / 360°	Radome Dimensions Inches (H" x D")	219 x 2.5 (556.3 x 6.4)
Supported Polarization	Vertical	Total Length Inches (H")	245 (622.3)
Vertical Beam Tilt (from horizon)	0°	Installed Weight Lbs (Antenna + Default Clamp)	45 + 11 (20.4 + 5 Kg)
RF Impedance	50 Ohms	Antenna Shipping Mode (Freight/UPS/FedEx/etc.)	Freight Only
DC Impedance	Short	Shipping Weight = tube + ant + default clamp kit (lbs)	65 (29.5 Kg)
Input VSWR / Return Loss (Minimum)	1.5:1 / 14 dB	Shipping Box Dimensions (L" x W") (Round Tube)	200 x 4 (508 x 10.2)
Coastal / Salt Air Suitable	Yes	Default Clamp Shipping Weight - Separate Box (lbs)	NA
Temperature Range (Operating or Storage)	-58 to +140 °F -50 to +60 °C	Default Clamp Shipping Box Dimensions (L" x W" x H")	NA

Variations - HIGH

Part Number	Frequency	Band	Connector	Jumper	Default Clamp	Mounting
ANT150F6-3	150 to 157 MHz	HIGH	N-F	None	ANTC482	Clamps Bottom (Normal)
ANT150F6-3DIN	150 to 157 MHz	HIGH	7/16 DIN-F	None	ANTC482	Clamps Bottom (Normal)
ANT150F6-3I	150 to 157 MHz	HIGH	N-F	None	ANTC482	Clamps Top (Inverted)
ANT150F6-C	151.5 to 157.5 MHz	HIGH	N-F	None	ANTC482	Clamps Bottom (Normal)
ANT150F6-SF	153 to 161 MHz	HIGH	N-F	None	ANTC482	Clamps Bottom (Normal)
ANT150F6-G	154 to 162 MHz	HIGH	N-F	None	ANTC482	Clamps Bottom (Normal)
ANT150F6-A	155 to 163 MHz	HIGH	N-F	None	ANTC482	Clamps Bottom (Normal)
ANT150F6-4	156 to 164 MHz	HIGH	N-F	None	ANTC482	Clamps Bottom (Normal)
ANT150F6-4DIN	156 to 164 MHz	HIGH	7/16 DIN-F	None	ANTC482	Clamps Bottom (Normal)
ANT150F6-4I	156 to 164 MHz	HIGH	N-F	None	ANTC482	Clamps Top (Inverted)
ANT150F6-5	158 to 166 MHz	HIGH	N-F	None	ANTC482	Clamps Bottom (Normal)
ANT150F6-5DIN	158 to 166 MHz	HIGH	7/16 DIN-F	None	ANTC482	Clamps Bottom (Normal)
ANT150F6-6	161 to 168 MHz	HIGH	N-F	None	ANTC482	Clamps Bottom (Normal)
ANT150F6-6DIN	161 to 168 MHz	HIGH	7/16 DIN-F	None	ANTC482	Clamps Bottom (Normal)
ANT150F6-E	165 to 172 MHz	HIGH	N-F	None	ANTC482	Clamps Bottom (Normal)
ANT150F6-D	166 to 173 MHz	HIGH	N-F	None	ANTC482	Clamps Bottom (Normal)
ANT150F6-7	167 to 172.5 MHz	HIGH	N-F	None	ANTC482	Clamps Bottom (Normal)
ANT150F6-7DIN	167 to 172.5 MHz	HIGH	7/16 DIN-F	None	ANTC482	Clamps Bottom (Normal)
ANT150F6-7I	167 to 172.5 MHz	HIGH	N-F	None	ANTC482	Clamps Top (Inverted)
ANT150F6-8	171 to 175 MHz	HIGH	N-F	None	ANTC482	Clamps Bottom (Normal)
ANT150F6-L	173.1 MHz	HIGH	N-F	None	ANTC482	Clamps Bottom (Normal)

SPECIFICATIONS - HIGH

Frequency Range (Continuous)	150 to 175 MHz	Wind rating / with 0.5" ice (MPH)	225 / 150
Gain	6 dBd/ 8.1 dBi	Maximum exposed area (sq.ft)	2.97
Power Rating (RMS Continuous)	500 watts / 57 dBm	Lateral Thrust experienced by the antenna 225 MPH (lb)	388
Passive Intermodulation (PIM) Rating	NA	Bending Moment transfer to top clamp 225 MPH (lb-ft)	2405
Peak Instantaneous Power (PIP) Rating	NA	Ferrule Dimension Inches (H" x D")	26 x 2.75 (66 x 7)
Beam width Vertical / Horizontal	20° / 360°	Radome Dimensions Inches (H" x D")	219 x 2.5 (556.3 x 6.4)
Supported Polarization	Vertical	Total Length Inches (H")	245 (622.3)
Vertical Beam Tilt (from horizon)	0°	Installed Weight Lbs (Antenna + Default Clamp)	45 + 11 (20.4 + 5 Kg)
RF Impedance	50 Ohms	Antenna Shipping Mode (Freight/UPS/FedEx/etc.)	Freight Only
DC Impedance	Short	Shipping Weight = tube + ant + default clamp kit (lbs)	65 (29.5 Kg)
Input VSWR / Return Loss (Minimum)	1.5:1 / 14 dB	Shipping Box Dimensions (L" x W") (Round Tube)	200 x 4 (508 x 10.2)
Coastal / Salt Air Suitable	Yes	Default Clamp Shipping Weight - Separate Box (lbs)	NA
Temperature Range (Operating or Storage)	-58 to +140 °F -50 to +60 °C	Default Clamp Shipping Box Dimensions (L" x W" x H")	NA

ANTC482

Clamp Kit for Radome Antennas: HP F6 F8 & F10

WARNING

For your safety: do not install any antenna near power lines, carefully follow all installation instructions, and use safety devices when climbing. Ensure that the tower structure is properly and safely grounded.

If the antenna falls toward or contacts any overhead wires, IMMEDIATELY LET GO and stay away. Contact the utility company for assistance.

Consult a qualified structural engineer to verify that the tower and all mounting hardware are sufficient to support the antenna and RF cables.

Antenna mounting clamps must be properly installed and spaced to prevent antenna rotation from wind loading. Every installation is unique.

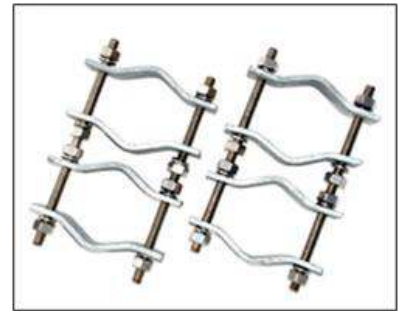
MOUNTING INSTRUCTIONS

1. Apply anti-seize compound to the threaded rod ends. Insert rods through dual clamps with hex nuts and lock washers in the middle of the clamps. Mount both clamps to the support structure with the two single clamp plates, hex nuts, and lock washers. Arrange clamps so that 1"-2" of the ferrule is exposed above and below the clamps. Be sure to allow sufficient thread length on the antenna side of the clamps.
2. Attach the antenna clamp plate to the upper clamp set only, allowing maximum plate movement on the rods. Feed the ferrule down through the clamp until aligned with the upper attachment point. Partially tighten the hex nuts and straighten the antenna until the antenna is vertical.
3. Attach and secure the lower antenna clamp with the supplied hex nuts and lock washers and tighten both clamps until the lock washers are flat. Then perform an additional half turn on each nut.
4. Connect RF feed cable terminated with Type-N or 7-16 DIN as required to antenna input connector. Secure all cables with UV-Resistant cable ties.
5. Seal the input connector with waterproof tape or other sealing material. Connector sealing instructions can be found at www.telewave.com.



ANTC482 Clamp Kit

- (8) Galvanized Clamp Plates
- (4) 1/2"-13 x 10" Stainless Steel Rods
- (16) 1/2" Stainless Steel Hex Nuts
- (16) 1/2" Stainless Steel Split Lock Washers
- (1) Tube of Anti-Seize Compound



ANTC482 Clamp Kit

Cart Summary / 1 PRODUCT

[Clear Cart](#) [Continue Shopping](#)

NAME	SKU	PRICE	QUANTITY	TOTAL
TeleWave ANT150F6-2	9122	\$2,899.95	1 <input type="text"/>	\$2,899.95
SUBTOTAL:				\$2,899.95

Checkout as Guest or Register

REGISTER WITH US FOR FUTURE CONVENIENCE:

Checkout as Guest

E-Mail *

Register

Register and save time!

Register with us for future convenience:

- Fast and easy checkout
- Easy access to your order history and status

[Checkout as Guest](#)

Login And Checkout

ALREADY REGISTERED? THEN LOGIN HERE:

E-mail or Username

Password

Remember me

[Login And Checkout](#)

[Forgot your username?](#)

[Forgot your password?](#)

Address

441 Elk Run Dr Bldg G
Rexford, MT 59930
Ph: 406-333-7989
Mon-Fri 10am to 5pm MT

Information

[Shipping & Returns](#)
[Privacy Policy](#)
[Terms of Service](#)
[Radio Tutorial](#)
[Antenna Tutorial](#)
[Contact Us](#)
[Sitemap](#)

Categories

[Radios](#) [Connectors & Adapters](#)
[Antennas & Mounts](#) [Amplifiers](#)
[Two Way Accessories](#) [Power Supplies & Converters](#)
[Antenna Accessories](#) [Tower & Hardware](#)
[Cable & Accessories](#)



QUOTATION

Authorized Vendor for the state of South Carolina

Dx Ham Radio Supply LLC
 639 E. Church ST.
 LEESVILLE SC. 29070
 803-719-1683

Quote Number: 031926
 Quote Date: March 20, 2026
 Page: 1

Quoted To:
Zach Gunyan Sweetwater Amateur Radio Club

Ship To:
Sweetwater Amateur Radio Club

Customer ID	Contact	Good Thru
SWARC	Zach Gunyan	04/20/2026

Quantity	Item	Description	Unit Price	Amount
200 FT	Andrew Heliax Cable LDF4-50A 1/2"	The Andrew LDF4-50A 1/2 inch foam dielectric 50 Ohm coax cable features a 5 inch bending radius that prevents kinking. This coaxial cable has an annular corrugated copper outer conductor and a copper-clad aluminum center conductor. Maximum frequency capacity is 8.8 GHz.	452.10	452.10
4	Commscope N Male 1/2" Positive Stop For LDF4-50A Coax		19.68	78.72

TERMS & CONDITIONS:

- 1) ALL PRICES QUOTED IN US DOLLARS
- 2) ORDERS ARE NON-CANCELLABLE / NON-RETURNABLE ONCE ACCEPTED.

Subtotal	530.82
Shipping	TBD
TOTAL	\$